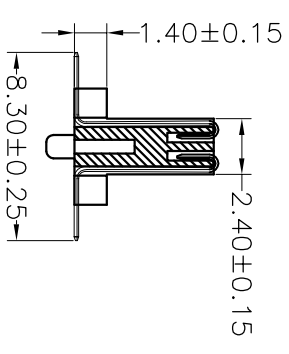
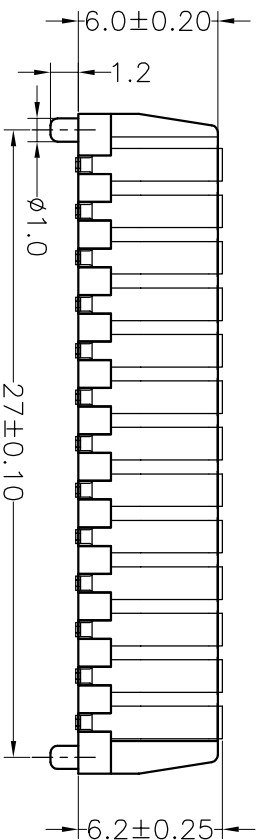
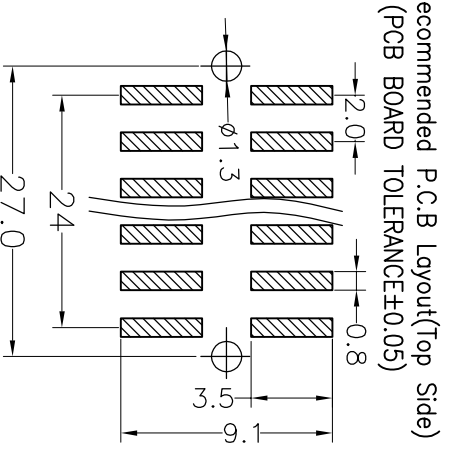
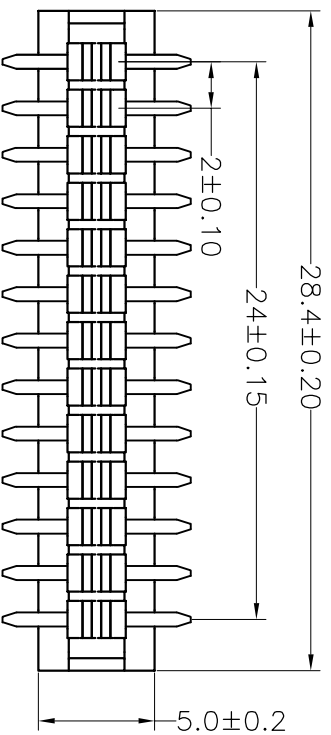


HSE ROHS

SPECIFICATIONS

Rated Current:1.5AMP
 Contact Resistance:20mΩ Max
 Withstand Voltage:500V AC/DC
 Insulation Resistance:500MΩ Min
 Operation Temperature:-40°c to +105°c

Contact Material:Phosphor bronze
 Contact Plating:Au or Sn Over Ni
 Insulator Material:Polyester(UL94V-0)
 Standard: PA9T
 Max.Processing Temp: 230°C for 30-60 seconds
 260°C for 10 seconds

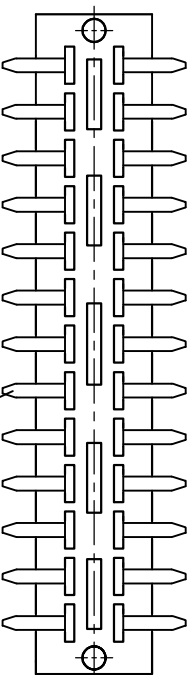


Ordering Information

4400- 2 13 M G1 M E B W 01

No.of Pins
2x13P

Contact Plating
 G0:Gold Flash
 G1:1U" Gold
 G2:2U" Gold
 G3:3U" Gold
 G4:5U" Gold
 G5:10U" Gold



OPERATION	±0.30	DRAW	JinChengXin	17.11.24	SCALE	FIT
	X.X				UNIT	mm
	X.XX	±0.20	CHECK		SIZE	A4
	X.XXX	±0.10			SHEET	1/1
	Angle	±3°	APPROVE		PROJ.	
	DIM	TOL				

JIN 深圳市锦凌电子有限公司
 SHENZHEN JINLING ELECTRONIC CO.,LTD
 Tel: 86-755-2997-5806/5802 Fax: 86-755-2997-5992

PART NO. 4400-213MG1MEBW01

TITLE: 2.0金手指连接器 2X13P 公座 SMT 带柱

REV	DATE	MODIFICATION DESCRIPTION	CHANGE
A0	2017.11.24	NEW DRAWING	
1			